



# SmartDrive

## BLDC

### traction units

#### Target applications:

- electric traction (vehicles)
- stairlifters
- disabled people care
- Industrial actuators
- Conveyor belts
- textile machines

#### Key features

- Microcontroller or DSP based
- compact & rugged, heavy-duty design
- UL approved
- Soft-start, bidirectional 2Q and 4Q driving
- Fast or controlled braking
- Fast hardware current limit
- Standard serial link for parameters setting, software download and monitoring
- Overtemperature, overcurrent, locked rotor, over and under voltage protections

#### Overview

Battery powered traction requests lowest weight and highest efficiency to make the best use of the batteries.

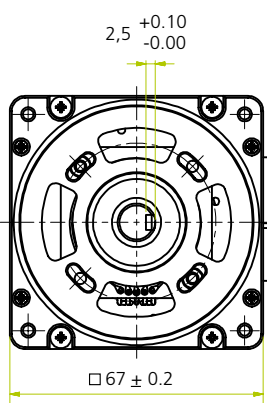
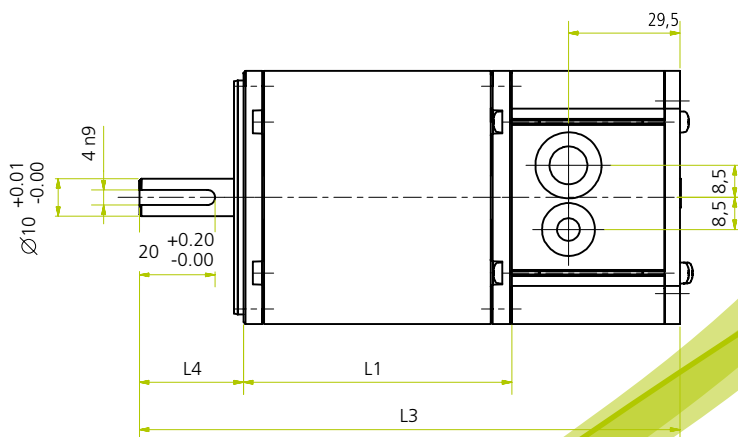
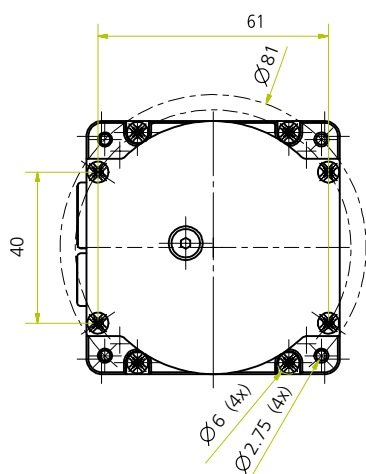
Carefully selecting the right motor for the purpose, ATech designed a family of traction drives of unmatched performance in terms of efficiency, compact size, power to weight ratio, accuracy and low-noise.

The TR-550 version can provide an output of more than 1kW for several minutes making it an ideal choice for stairlifter applications.

With built-in communication these drives can be parametrised via PC using ATech's parametrisation software and interface.

#### Options

- Serial communication
- PC interface with parametrization software
- Encoder type signal output
- customized logic and safety functions



## Technical information

|                    | TR-150                                   | TR-370                            | TR-550                            |
|--------------------|--|-----------------------------------|-----------------------------------|
| SUPPLY VOLTAGE     | 12 - 48V DC / 65V<br>peak voltage        | 12 - 48V DC / 65V<br>peak voltage | 12 - 48V DC / 65V<br>peak voltage |
| MAXIMUM SPEED      | 3.000rpm / 8pol                          | 3.000rpm / 8pol                   | 3.000rpm / 8pol                   |
| POWER (S1)         | 150 W                                    | 370 W                             | 550 W                             |
| Dimensions (L3)    | 121 mm                                   | 138 mm                            | 156 mm                            |
| features           | SPEED LOOP<br>TORQUE LOOP                |                                   |                                   |
| SPEED SET INPUT    | 0 to 5V<br>or 0 to power supply          |                                   |                                   |
| DRIVING ALGORITHMS | bidirectional 2Q and 4Q<br>driving modes |                                   |                                   |