

CaSi Energy Switch Unit

for MIFARE RFID cards



Product overview

CaSi Energy Switch Unit allows reduction of energy consumption used for HVAC (heating, ventilation, air conditioning) lighting and other purposes by applying intelligent energy management based on room occupancy.

CaSi Energy Switch Unit is an RFID card holder that has been designed for fast and easy integration into building automation systems. CaSi is designed as a slave unit with RS485 communication whereas each CaSi has a unique, factory assigned ID code that permits connection of two or more units on the same RS485 line.

The building automation system may allow electrical and HVAC equipment to be set by the room occupants based on the presence of a valid MIFARE RFID keycard in CaSi. Additionally CaSi has 2 relay driving outputs that may be used to power on installed equipment based on the system authorization so no specific room control unit is needed. CaSi is compatible with CEE60 electrical installation boxes and can feature a customized logo.

Key features

- For MIFARE® Ultralight, Mini, 1K and 4K RFID Cards
- CEE60 electrical junction box compatible
- RS485 communication with programmable bitrate
- unique, factory assigned ID code permits connection of more CaSi on same RS485 line
- OLCC and CBA function (see special features)
- Wide power supply range (10-50VDC)
- 2 independent 5VDC relay driving outputs
- Programmable red LED indicator
- Cover and plate available in several colors and materials to combine in personalized final look

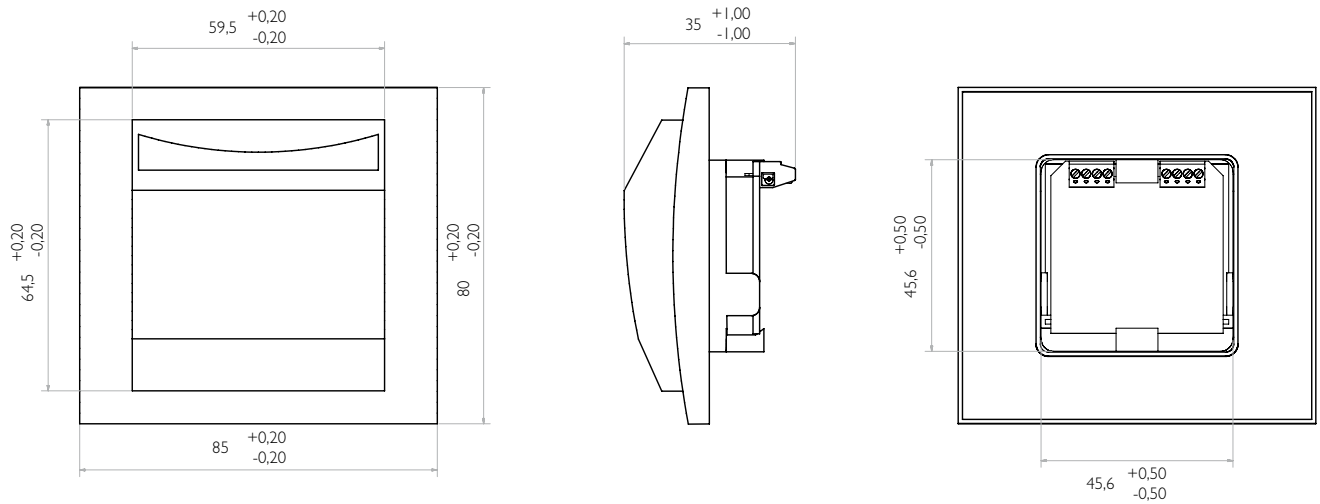
Target Applications

HOTEL ROOMS

LABORATORIES

OFFICES

INTELLIGENT BUILDINGS

**CaSi consists of:**

- Cover plate
(white, beige, aluminum and graphite)
- Cover frame
(various colors, material: plastic, metal or wood)
- Reader unit
- CEE60 compatible mounting frame
- 2 screws

SPECIAL FEATURES:

- OLCC (Off-Line CaSi Customization) is a technology that allows to programme already installed units with custom software settings using specially programmed MIFARE cards; such programming is extremely easy - no need for any hardware and trained personnel.
- CBA (CaSi Broadcast Address); by using a special command each connected CaSi will broadcast its address; this feature makes system integration, start-up and maintenance fast and easy.
- System integrators can program an additional ID code for simple system set-up

TECHNICAL DATA:

Card type:	MIFARE® Ultralight, MIFARE® Mini, MIFARE® 1K and 4K RFID Cards		
Status indication:	programmable red LED		
Operating temperature range:	-10 + 50 deg. C		
Communication:	RS485		
Programmable RS485 baudrate:	19200, 38400 (default), 57600 On board 120 ohm resistor for RS485 line ending		
Power, RS485 & relay connection:	screw terminals		
Power supply:	min 10VDC*	typ 24VDC	max 50VDC
Stand-by current consumption:	typ 5.2 mA		
Peak current consumption:	typ 42 mA		
Relay drivers:	2		
Relay coil voltage:	typ 5Vdc		
Relay driving output:	2 x 5 Vdc / max 40 mA		
Product compliant to:	ISO 14443-A part 1, 2 and 3; CE norms		

* [at following conditions: 150 m line length, 15 evenly distributed CaSi units, power supply wire 80 mOhm/m]

DISCLAIMER: "Information contained in this publication regarding device applications and the like is provided only for your convenience and may be superseded by updates. It is your responsibility to ensure that your application meets with your specifications. Atech makes no representation or warranties of any kind whether express or implied, written or oral, statutory or otherwise, related to the information, including but not limited to its condition, quality, performance, merchantability or fitness for purpose. Atech disclaims all liability arising from this information and its use. No licenses are conveyed, implicitly or otherwise, under any Atech intellectual property rights."